

GRAPHITECH

GRAPHITE RUPTURE DISCS

Oseco's GraphiTech rupture discs are made of resin-impregnated graphite for use in highly corrosive processes.

GraphiTech Rupture Discs Available:

GTM - GraphiTech Monoblock

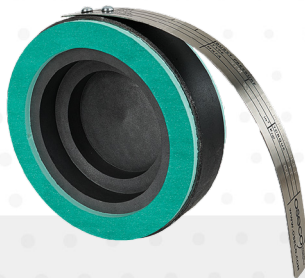
GTI - GraphiTech Inverted

GTMV - GraphiTech Monoblock with Vacuum Support

GTI

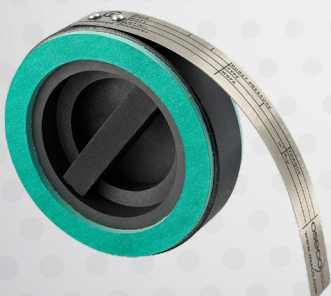


GTM

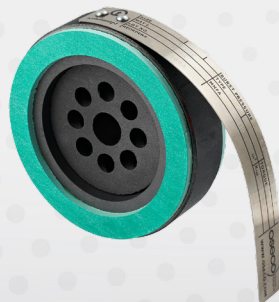


GTMV

BAR



DIAL



Oseco's GraphiTech rupture discs are for use in highly corrosive processes.

- Excellent for gas and liquid service
- Corrosion resistant
- No holder required, mounts between ANSI flanges
- Includes non-asbestos inlet and outlet gaskets
- 392° F maximum temperature without high temperature spacer
- TFE grade fluoropolymer liners available for the process side of the disc (GTI)
- Available armored ring recommended (carbon steel or stainless steel available)
- High Temperature Spacer "HT" available for gas and vapor applications where temperatures exceed 392° F
- Designed to meet ASME Section VIII standards

Sizes

1" - 24"

Operating Ratio

90%

K_R Value

GTM - K_{RGL} : 0.6

GTMV - K_{RGL} : 6.44

GTI - K_{RGL} : 0.5

Manufacturing Range

0%



GraphiTech Technical Specifications

GraphiTech Min/Max Burst Pressure @ 72° F (psig) / 22° C (barg) in 150# Flanges

SIZE inches (metric)	GTM		GTI		GTMV	
	MIN psig (barg)	MAX psig (barg)	MIN psig (barg)	MAX psig (barg)	MIN psig (barg)	MAX psig (barg)
1" DN 25	15 (1.03)	400 (27.58)	15 (1.03)	400 (27.58)	15 (1.03)	20 (1.38)
1.5" DN 40	10 (0.69)	300 (20.68)	10 (0.69)	300 (20.68)	10 (0.69)	20 (1.38)
2" DN 50	4 (0.28)	250 (17.24)	4 (0.28)	250 (17.24)	4 (0.28)	20 (1.38)
3" DN 80	3 (0.21)	200 (13.79)	3 (0.21)	200 (15.79)	3 (0.21)	20 (1.38)
4" DN 100	2 (0.14)	150 (10.34)	2 (0.14)	150 (10.34)	2 (0.14)	20 (1.38)
6" DN 150	2 (0.14)	100 (6.89)	2 (0.14)	150 (10.34)	2 (0.14)	20 (1.38)
8" DN 200	1 (0.7)	100 (6.89)	1 (0.7)	150 (10.34)	1 (0.7)	20 (1.38)
10" DN 250	1 (0.7)	100 (6.89)	1 (0.7)	125 (8.62)	1 (0.7)	20 (1.38)
12" DN 300	0.5 (0.03)	100 (6.89)	0.5 (0.03)	125 (8.62)	0.5 (0.03)	20 (1.38)
14" DN 350	0.5 (0.03)	75 (5.17)	0.5 (0.03)	100 (6.89)	0.5 (0.03)	20 (1.38)
16" DN 400	0.5 (0.03)	75 (5.17)	0.5 (0.03)	100 (6.89)	0.5 (0.03)	20 (1.38)
18" DN 450	0.5 (0.03)	50 (3.45)	0.5 (0.03)	100 (6.89)	0.5 (0.03)	20 (1.38)
20" DN 500	0.5 (0.03)	50 (3.45)	0.5 (0.03)	50 (3.45)	0.5 (0.03)	20 (1.38)
24" DN 600	0.5 (0.03)	25 (1.72)	0.5 (0.03)	50 (3.45)	0.5 (0.03)	20 (1.38)

GraphiTech Min/Max Burst Pressure @ 72° F (psig) / 22° C (barg) in 300# Flanges

SIZE inches (metric)	GTM		GTI		GTMV	
	MIN psig (barg)	MAX psig (barg)	MIN psig (barg)	MAX psig (barg)	MIN psig (barg)	MAX psig (barg)
1" DN 25	50 (3.45)	400 (27.58)	10 (0.69)	400 (27.58)	15 (1.03)	20 (1.38)
1.5" DN 40	15 (1.03)	300 (20.68)	7 (0.48)	300 (20.68)	10 (0.69)	20 (1.38)
2" DN 50	15 (1.03)	250 (17.24)	3 (0.48)	250 (17.24)	4 (0.28)	20 (1.38)
3" DN 80	15 (1.03)	200 (13.79)	2 (0.14)	200 (15.79)	3 (0.21)	20 (1.38)
4" DN 100	15 (1.03)	150 (10.34)	1.5 (0.10)	150 (10.34)	2 (0.14)	20 (1.38)
6" DN 150	15 (1.03)	100 (6.89)	1 (0.07)	150 (10.34)	2 (0.14)	20 (1.38)
8" DN 200	15 (1.03)	100 (6.89)	0.50 (0.03)	150 (10.34)	1 (0.7)	20 (1.38)

Armored ring required at or above these Burst Pressures

NOMINAL DIAMETER inches	BURST PRESSURE psig (barg)
1-3"	150 (10.34)
4" and 6"	100 (6.89)
8" and 10"	75 (5.17)
12-24"	50 (3.45)

Burst Tolerance

+/-5% above 15 psig +/-0.75psig below 15 psig

+0.75/-0 psig below 1 psig

Related Products

RUPTURE DISCS

GTM
GTI
GTMV - BAR
GTMV - DIAL

ACCESSORIES

HIGH TEMPERATURE SPACER

Certifications

ASME UD
PED 2014/68/EU

Let us help you with all your pressure relief questions.

Call us at (800) 395-3475 or email us at info@oseco.com.

www.oseco.com

