

Capped unit (OE2)

Technical Information

Including specifications, performance data and schematic

General specifications

Standard disc sizes*	6mm, 8mm, 10mm, 11mm
Standard thread sizes*	M12, M14, M16, M18
Standard thread types*	Inlet: M12, M14, M16, M18. Outlet: Through or baffle
Standard burst pressure range	25 barg – 200 barg (360 psig – 2900 psig)
Standard Temperature Range	-70°C to 200°C (-94°F to 392°F)
Maximum Operating Ratio	85% of minimum burst pressure (55 barg – 200 barg) (forward acting disc)
Performance tolerance	+/- 5% (forward acting disc)
Leak Rate	Helium Leak tested and tight to 1x10 ⁻⁴ mbar.l/sec**
Vacuum Service	Yes
Fluid Compatibility	Gas, vapour, liquid
Disc Type	Conventional (forward acting and tension loaded)
Fragmentation	May fragment, depending on design
Disc material*	Nickel, stainless steel, copper, Monel
Body material	Brass
Disc Connection to Body	Capped brass (with/without copper seal)

*Others available on request

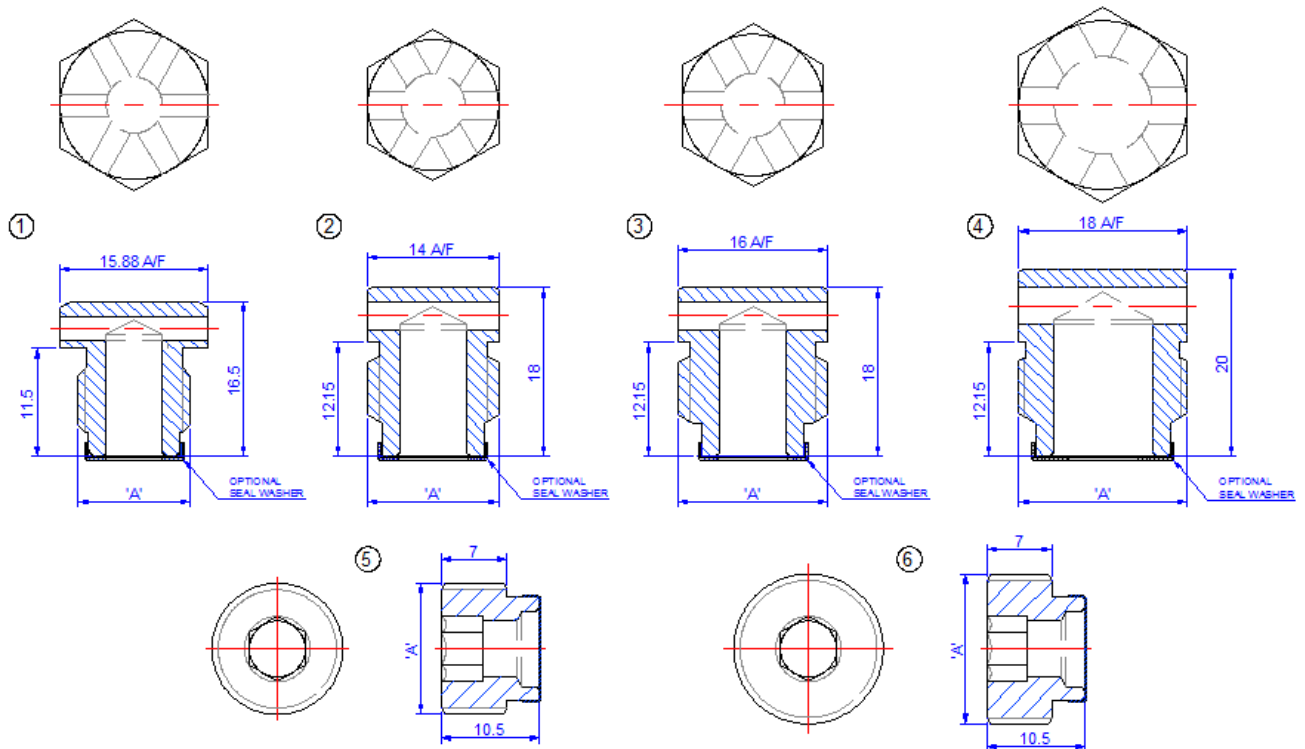
**Design dependent

Burst pressure ranges in barg (psig) at 15-30°C (59-86°F)

Nominal bore		All with brass plug									
		Burst pressures for the following disc materials are:									
		Stainless steel		Monel		Nickel		Copper		Aluminium	
mm	inch	min	max	min	max	min	max	min	max	min	max
6	0.2	1250	2900	1050	2900	850	2900	450	2900	1050	2900
8	0.3	1000	2900	800	2900	650	2900	330	2900	800	2900
10	0.4	800	2900	635	2900	500	2900	260	2900	635	2900
11	0.4	750	2900	575	2900	450	2900	240	2900	575	2900

Capped unit (OE2)

Product Schematic



Hex type plug
(Items 1 to 4)

Item	THREAD 'A'	FFA (mm ²)
1	M12 x 1	24.9
	M12 x 1.25	24.9
2	M14 x 1	39.6
	M14 x 1.25	39.6
3	M16 x 1	39.6
	M16 x 1.25	39.6
4	M18 x 1	71.6

Socket cap type plug
(Items EMS 5 and 6)

ITEM	THREAD 'A'	FFA (mm ²)
5	M14 x 1.25-6g	23.27
6	M16 x 1.25	23.27